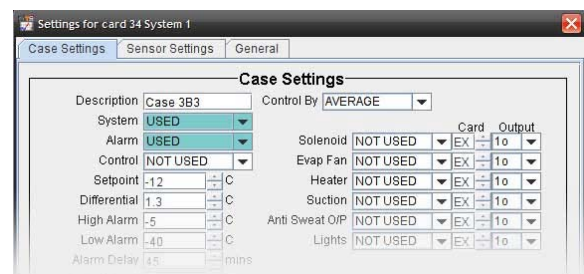
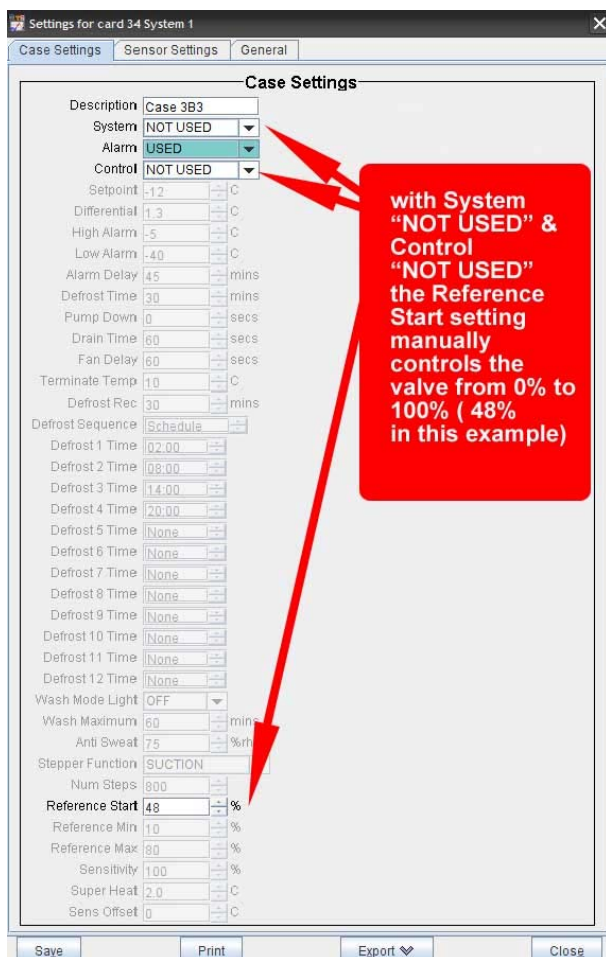


Phasefale Presscon Case Control

Manual Valve Operation, Load Defaults New feature Case Control Versions 1.1 and above

With the release of Case Control Software Version 1.1 (and higher) there are 2 new Features designed to aid in installation, commissioning and diagnostics:

1. The EEPR Electronic valve can be Shut off. The examples below show this function activated from Pressnet, but it can also be activated via the Case Monitor (all Versions).
2. The EEPR Electronic valve can be set to any desired % position. The examples below show this function activated from Pressnet, but it can also be activated via the Case Monitor (all Versions).
3. A new Load defaults option allows the Stepper valve settings to be set to 200 steps/second and 6400 steps (suitable for Sporlan CDS types). The "Load Defaults" option is only in the Case monitor software (Version 1.13 and above) in the Hardware Menu of the particular Case control.



Above: To SHUT OFF Valve (0%) Set the Control to "NOT USED"

Left: to set the valve to any position from 0-100%, set System and Control to "NOT USED" then adjust the "Reference Start" Value to desired position and save. Note: after manual operation, reset Reference Start value to desired setting (default is 25% recommended)